

LOCATIONS OF GOVERNMENT OFFICES

The City of Lapeer is the largest established city within the county and is the county seat of government. Offices of the county clerk, probate court, circuit court, and treasurer are located within the County Complex at 255 Clay Street. Register of Deeds is located across the street, next to the historical courthouse, in the Annex Building.

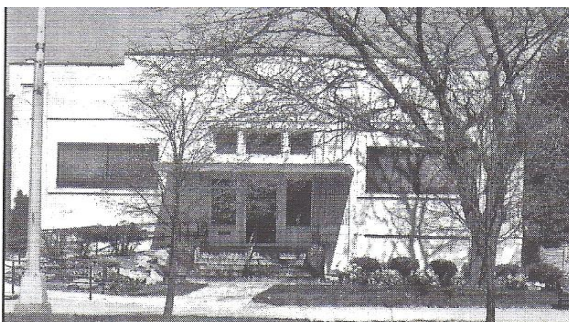
County Clerk – (810) 667-0356

Probate Court – (810) 667-0261

Circuit Court – (810) 667-0358

Register of Deeds – (810) 667-0211

Treasurer's Office – (810) 667-0239



LAPEER COUNTY GENEALOGICAL SOCIETY

TOWNSHIPS OF LAPEER COUNTY

	Rich	Burlington	
Marathon	Deerfield	North Branch	Burnside
Oregon	Mayfield	Arcadia	Goodland
Elba	Lapeer	Attica	Imlay
Hadley	Metamora	Dryden	Almont

Lapeer County Genealogical Society

Website: lcgsmi.org

Contact: info@lcgsmi.org

RESEARCH CENTER

Located in the
Lapeer County Historical Museum
(across from the Post Office)
518 W. Nepessing Street
P.O. Box 353
Lapeer, MI 48446

Saturday
11 a.m. – 3 p.m.
except holidays or school closing

Other hours by appointment



Member of the

**Michigan
Genealogical
Council**

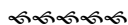
ABOUT US

The **Lapeer County Genealogical Society (LCGS)** was organized in 1980 and continues to be an active group. As a non-profit organization, operational funds come from dues, donations, and the sale of publications.

Membership – Dues are \$20 for an individual; \$25 for a family, \$10 for a High School/College Student; \$200 for a life membership; and \$20 for organizations. Please request a membership form with prices and descriptions. New members receive an ancestor chart, family group sheet, free queries published in the quarterly and access to the Members-only section of the LCGS website.



LAPEER LEGACY, the Society publication, is sent to each membership three times a year, and current issues are published on the LCGS Website. Members are encouraged to submit queries, articles, and other information about Lapeer County and families which will be of interest to readers.



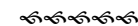
Meetings are held monthly in April, May, June (picnic), September, October, and November, typically on the 2nd Tuesday. The time and location will be communicated prior to each meeting. Several area newspapers publicize information about the meetings. Guests are always welcome.

LAPEER COUNTY GENEALOGICAL SOCIETY RESEARCH CENTER (located across from the post office)

The Research Center is the holding place for the Society's genealogical collection.

- Birth, Marriage, Death Records
- Cemetery transcriptions & updates
- Landowner atlases and plat maps – 1863, 1874, 1893, 1906, 1915 and the latter half of the 1900s
- Newspaper microfilm – 1878-1976 and 2003-2010 (DVDs from 2007-2010)
- Index to newspaper microfilm – 1878-1954
- Card file of obituaries - Thousands!
- Probate Index 1835-1900
- Donated family histories
- Ancestor charts submitted since 1980
- Correspondence file of research queries
- Funeral Home records
- 1884 & 1978 History of Lapeer County
- Various scrapbooks of clippings
- Notebooks about people from Lapeer County who served in the Military
- Naturalization Index
- Census on microfilm – 1840-1930
- State Census – 1884 and 1894
- Indigent Soldier Burials
- Township and church histories
- Extensive death records 1933-2010
- Green Books with indexed names/dates from 1878-1954 Lapeer newspapers by Carol Pine
- Lapeer High School Alumni & county school information
- City & Rural Directories and Phone Books
- *Lapeer Legacy* quarterly from 1983 to present
- Sanborn Fire Maps (microfilm) – late 1800s to early 1900s
- Information about nearby counties, other states and countries as space permits.

Volunteers are available to help you find information about your Lapeer County ancestors. A microfilm reader/printer and copy machine are available for your use.



Take time when you visit to enjoy the displays in the museum about Lapeer County history that are created by the Lapeer County Historical Society. Please sign the guest register when you visit.

Publications for Sale

LCGS has several publications for sale. Request a list/order form or see the "Store" on the LCGS website.

- History of Lapeer County
- Back issues of – *Lapeer Legacy*

Transcriptions of

- Births
- Marriages
- Deaths
- Cemeteries
- Landowner Atlases
- Assessment Records
- Indigent Soldier Burials
- Naturalization
- Census Index

Cookbook

Recipes submitted by members - \$10
Also available on CD - \$5
Puzzle of Lapeer Necessing Street in the 1860s - \$20
Available in the Research Center or can be mailed for an additional cost.